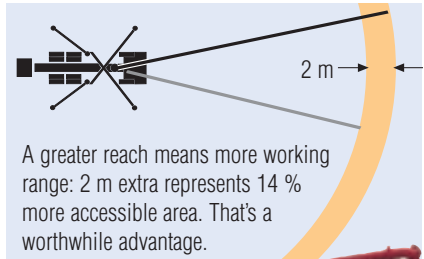


Unbeatable manoeuvrability on the jobsite – the M 36-4

Most fleets of concrete pumps across the world have the 30-m class of truck-mounted concrete pumps at their core. Choosing the correct machine is therefore the main factor of success for any owner.

The M 36-4 by Putzmeister is one of the world's most sought-after truck-mounted concrete pumps. With its Z-fold boom, the M 36-4 combines an optimum reach on a 3-axle chassis with added features and versatility, all at a gross weight of under 26 t.

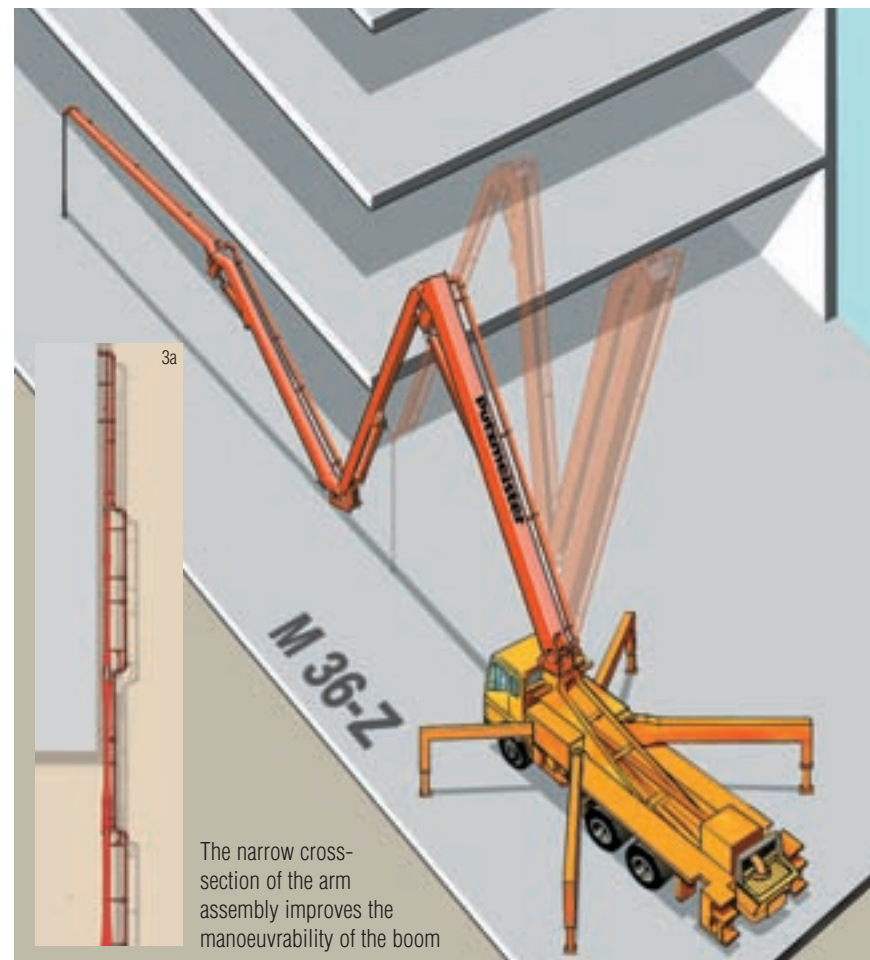
Genuine 36 metre reach with 14 % more working range generated by the boom movements



Faster. Further. More manoeuvrable. Thanks to the Z-fold system.

The great flexibility of the Z-fold system and the narrow cross-section of the arm assembly significantly improve the M 36-4's manoeuvrability. This enables jobs to be completed as fast and as simply as possible. Overcoming obstacles on construction sites is no big deal, as the M 36-4 is even able to reach places which would usually require larger machines or boom extensions.

It is also possible for the boom to slip into structures of up to 10 m in height if the machine is very close to the building. This creates a noticeably longer net reach. Thanks to its Z-fold system, the M 36-4 is ready to place concrete in no time, as not all of the arms need to be unfolded before pumping begins.



The narrow cross-section of the arm assembly improves the manoeuvrability of the boom

The M 36-4 impresses with equipment that is right for the job

There are now two well-priced equipment packages available for the M 36-4, which will make your work safer, more efficient and more straightforward: in addition to the equipment that is compulsory in Germany (CE and official road service approved kit), the **Power Kit** includes further practical accessories as optional equipment.

The Power Kit is integrated into the **Power Plus Kit**, the latter also includes equipment that will give you even more advantages during operation, e.g. spotlights and flashing lights on the support legs.

For more information, please see brochure BP 3177 GB.

Reduced weight of accessories is important to gross weight and when handling

When optimising the weight of truck-mounted concrete pumps, two crucial factors are the gross weight permissible according to road traffic regulations and the stable weight necessary for operation. The M 36-4 is particularly light, thanks to the optimum co-ordination of the Z-folding boom and its superstructure.

- The M 36-4, ready for operation and equipped with useful accessories, weighs in at less than the gross weight limit of 26 t.
- Generous storage areas accommodate hoses, pipes and accessories
- As the complete machine is lighter, it is possible to equip it with containers, support cradles and toolboxes.
- Its lighter weight and modular construction mean that it can be fitted onto more truck models than was previously possible.



An additional water pump supplies **100 bar** high pressure for cleaning work. The hopper is illuminated by a flood light on the boom (Power Plus Kit).



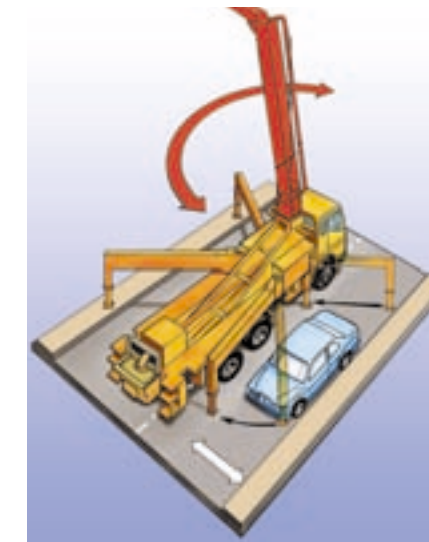
Spotlights facilitate the search for suitable support areas in the dark. Flashlights on the support legs noticeably enhance visibility on the building site.



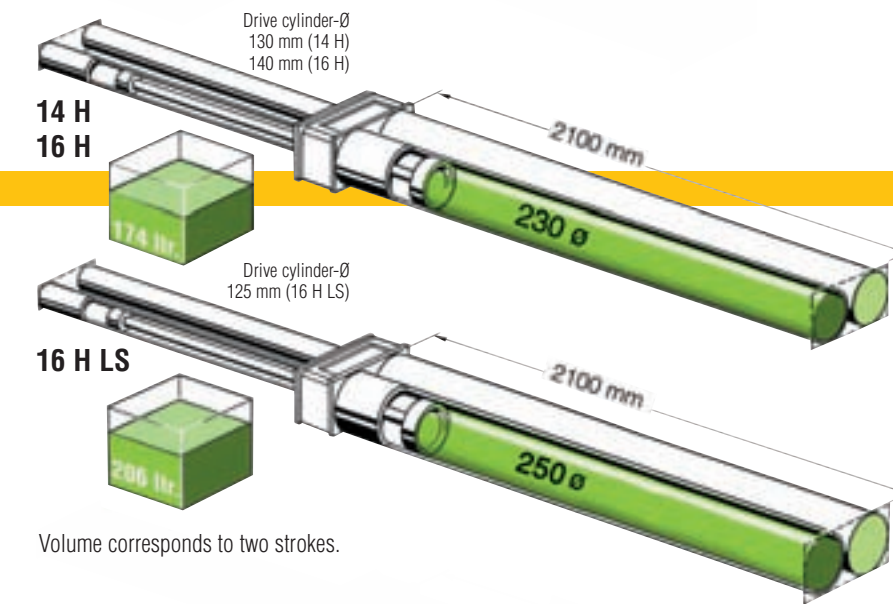
Large storage areas make it possible to carry delivery hoses, delivery pipes and accessories, thereby equipping the M 36-4 for every requirement on the construction site.

Optimised delivery line for less wear and lower costs

The delivery line on the M 36-4 boom runs in a straight line on one side of it. This means that there are only 9 delivery line bends and therefore fewer points of wear.



Available as option – OSS (one-sided support) – to allow operation of the M 36-4 on even the most cramped site conditions. Optimisation of net reach.



Volume corresponds to two strokes.

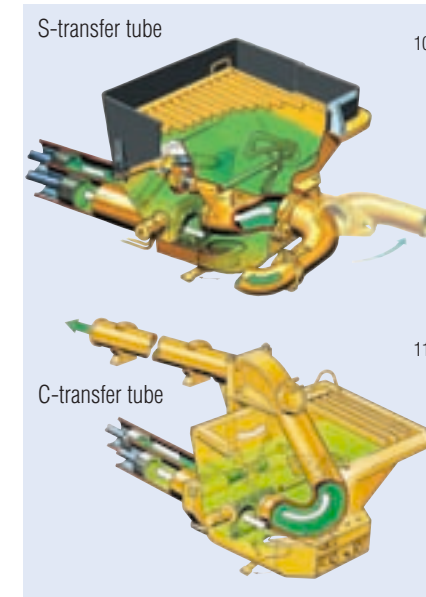
Large-volume pumps improve wear and filling rates

Large delivery cylinder volumes have proved themselves, as they reduce the change-over frequency and wear and increase smooth running. The placing boom functions more quietly due to the smaller number of change-overs made by the pumping unit.

The important factors in this are the larger diameter and corresponding stroke length, not a longer cylinder. Intake resistance is thus reduced. The finest components are not evacuated so much, and even more difficult concrete retains its pumpability with a high fill level.

The truck is protected from damage by the transmission of forces to the support legs

The great forces from the boom are transmitted directly to the four support legs. The truck chassis is not used for force transmission and is therefore not loaded with torsion. This ensures not only quieter pumping operation but also a long service life of the whole truck.



Ergonic® Systems

The technical advancement for more efficiency

Greater efficiency, lower costs, increased flexibility – these are the results that Putzmeister concrete pumps with Ergonic® systems can achieve in practice. Being ready for use more quickly, achieving increased placing performance, being fuel efficient and working with little wear and tear are important

economic factors generally, and not just for machine and pump operators. Construction site managers have also been convinced by the potential of Ergonic®: the construction site is running more efficiently and Putzmeister pumps with Ergonic® are simply set up to place concrete in a shorter time. Ergonic® systems are microprocessor-assisted

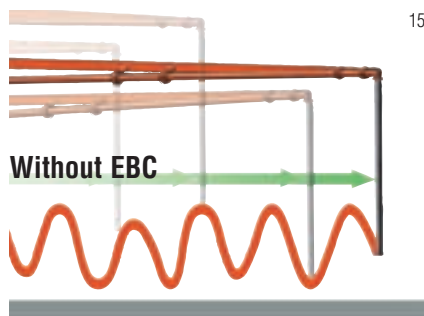


EBC – Ergonic® Boom Control

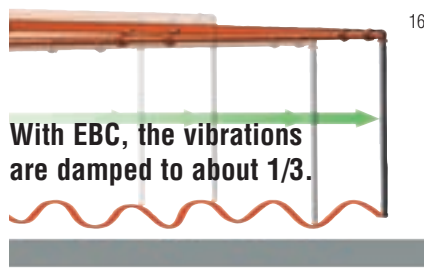
(optional) controls and regulates concrete placing booms. EBC enables a higher placement rate, reinforces occupational safety on the construction site and makes boom operation easier. EBC includes functions such as the damping of boom vibrations, the horizontal extension of the end hose at a constant height, or the specification of a working area (upper/lower limits).

EPS - Ergonic® Pump System

constantly monitors and regulates the operation of the concrete pump and the truck engine. Pump data, such as delivery pressure, delivery rate of the hydraulic pump, hydraulic pressure and many other signals, is actively and perfectly co-ordinated. This means maximum productivity and performance with minimum intervention from the operator.



Without EBC: Stop-start movements when the boom is moved and slewed and pump pulsations cause various degrees of deflection in the end hose.



With EBC: EBC reduces the vertical movement of the boom to about 1/3 and also damps the deflection of the end hose in all directions.



Important information on the machine is indicated by the EGD (Ergonic® Graphic Display)



Pump pressure and power can be very easily and quickly set to the respective requirements – this is important e.g. for renovation work

control systems for the control, regulation and monitoring of concrete pumps and booms. Further information about Ergonic® systems can be found in our brochure BP 3763 GB



The clear display on the remote control provides up-to-date feedback and system information about the machine. Various parameters can be set here. The strength of the radio signal and charge status of the battery is indicated via bars.

EOC – Ergonic® Output Control

ensures economic operation of the concrete pump. It automatically regulates the ideal engine speed with the lowest consumption, wear and noise.

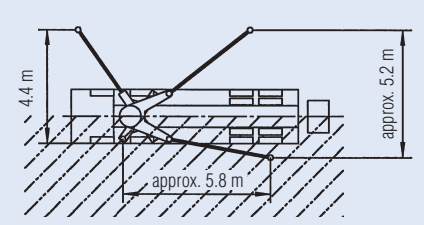
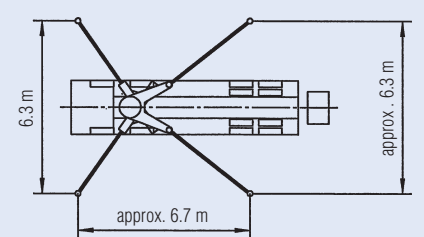
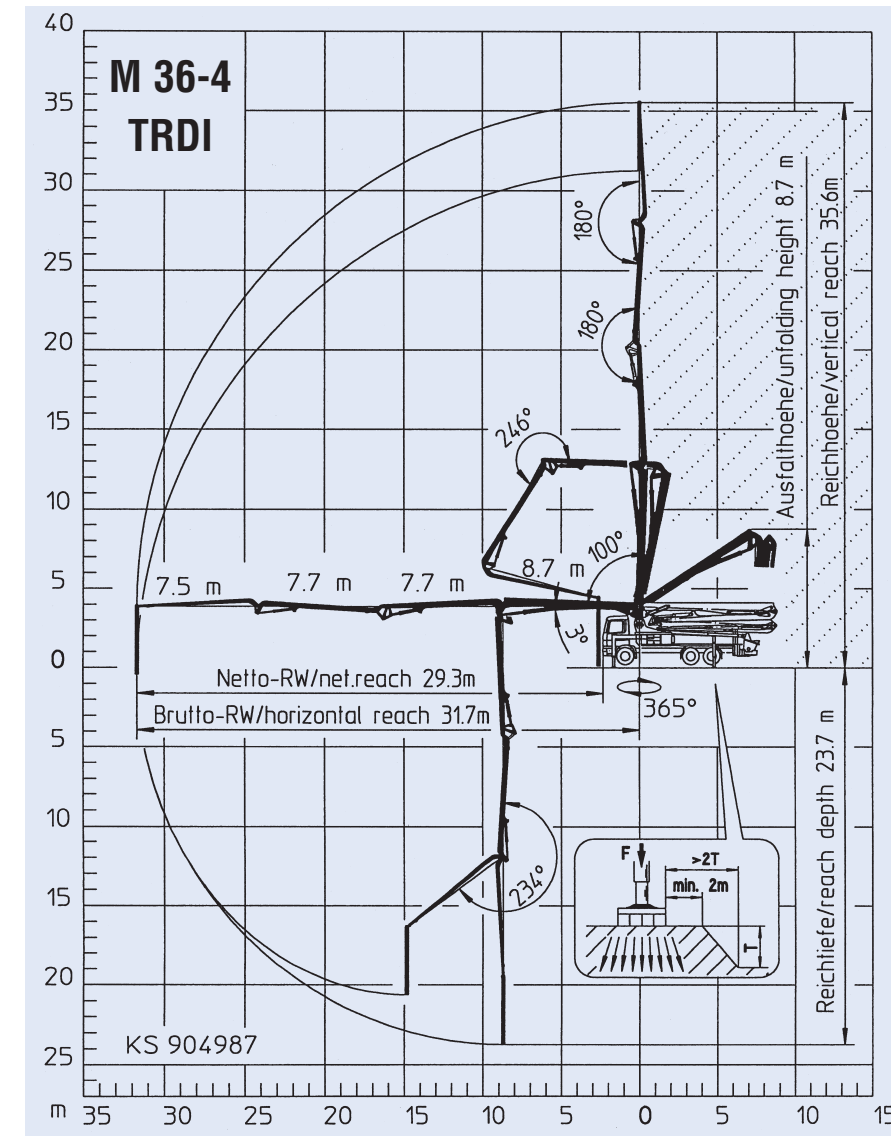
The EOC function is integrated in the EPS (Ergonic® Pump System).



You can set the delivery rate of your pump using just one rotary knob on the remote control. The EOC automatically controls the speed, avoiding the range which is unfavourable for the respective engine.

Truck-mounted concrete pump M 36-4

The flexible all-rounder with the Z-fold system



Technical data

Boom M 36-4	
Folding type	4-section-Z-folding (Z)
Vertical reach	35.6 m
Horizontal reach	31.7 m gross
Reach depth	max. 23.7 m
Unfolding height	8.7 m
Length end hose	4 m
Delivery lines	DN 125 max. 85 bar
Slewing range	365°
Support width front/rear	6.3 / 6.5 m

Pump BRF.16 H LS / BSF.16 H LS

Output	160 m³/h
Concrete pressure	85 bar
Delivery cyl.-Ø /-stroke	250/2100 mm
Strokes/min	26

Pump BRF.16 H / BSF.16 H

Output	160/108* m³/h
Concrete pressure	85/130* bar
Delivery cyl.-Ø /-stroke	230/2100 mm
Strokes/min	31/21*

Pump BRF.14 H / BSF.14 H

Output	140/88* m³/h
Concrete pressure	70/112* bar
Delivery cyl.-Ø /-stroke	230/2100 mm
Strokes/min	27/17*

All values max. theoretical. * rod side / piston side - Max. output and max. concrete pressure cannot be operated simultaneously.



Market Technique Fields

Concrete Technology PCT · Mortar Technology PMT
Pipe Technology PPT · Water Technology PWT
Industrial Technology PIT · Belt Technology PBT
Underground Technology PUC

Right to make technical amendments reserved
© by Putzmeister Concrete Pumps GmbH 2008
All rights reserved · Printed in Germany
(10803Sc)

Putzmeister Concrete Pumps GmbH
Max-Eyth-Str. 10 · 72631 Aichtal/Germany
P.O.Box 2152 · 72629 Aichtal/Germany
Tel. +49 (7127) 599-0 · Fax +49 (7127) 599-520
E-Mail: pmw@pmw.de · www.putzmeister.com

